

Colour Enhance

Water-Based Sandable Sealer for Timber Floors

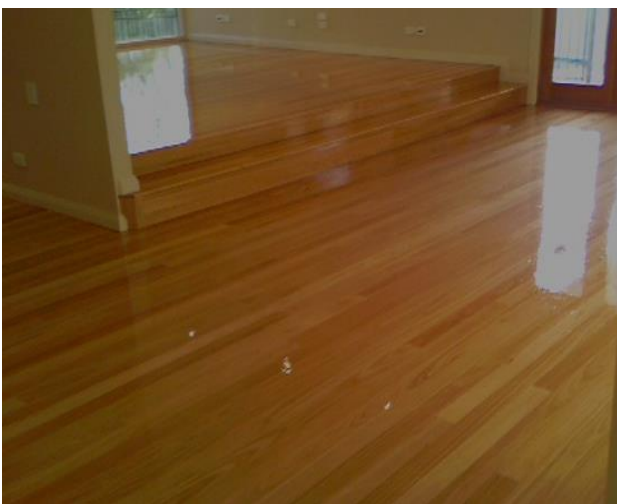
Description

Colour Enhance is an environmentally friendly waterborne primer and sealer for untreated timber floors that will enhance the rich colour of timber.

Colour Enhance has good working time to help minimise application marks and allow the material to flow level and look uniform.

Colour Enhance has early hardness development, so it can be sanded or recoated sooner than conventional timber sealers.

Colour Enhance emits almost zero toxic odours (VOCs) and is water-based, making it safe to use and minimising environmental impact.



Uses

Colour Enhance is suitable for interior and exterior applications on virtually any commercial species of timber available in Australia.

Advantages

- Enhances rich deep colours from timber floors
- Superior finish with minimal lap marks
- Tannin resistant preventing discolouration
- Sandable with the ability to create powder and not clog sandpaper or screens.
- Reduces potential for edge bonding
- Virtually odourless and friendly to the environment
- Ready to use from the container, easy to apply and fast drying

Coverage

One coat will cover approximately 8 - 12 square metres per litre.

Surface Inspection

Ensure the floor is acclimatised to its end use environment. Timber must have a moisture content close to equilibrium, usually 10-17% for satisfactory coating.

Surface Preparation

Sand back the surface to bare timber. Floors must be free from sanding dust, oil, wax and other foreign material that might prevent proper adhesion. A 120-grit sanding disc should be used for the final sanding process.

Application

Allow **Colour Enhance** to reach room temperature and shake the container lightly before use. Optimal coating conditions are between 18 - 25°C and 40 - 60% relative air humidity. **Minimum temperature for use is 10°C.**

Apply the primer evenly using a brush and 10mm microfibre roller. Roll with the timber grain avoiding accumulations of product. Care should be taken to achieve a uniform level of timber saturation to avoid colour variation. Always maintain a 'wet edge' to avoid overlaps. In higher temperatures dilute with **EcoShield 30+** at a rate of 5% for increased working time.

A minimum dry time of 30 minutes at 25°C before re-coat is required.

Colour Enhance is designed to be abraded and will not clog screens or sandpaper. For best results use a 180-grit screen or sand paper. Sanding is optional and is not required for adhesion between coats.

Remove all dust and apply 2 top coats of **EcoShield Carbon Coat**

Limitations

- Do not apply in conditions above 30°C
- Do not apply within 5 degrees of Dew Point, or if it is below 10°C
- Do not apply onto a damp or moist surface or the coating can turn white and may delaminate
- Always read MSDS before use of any product

Storage Period: 2 years (5-35°C)

Packaging: 5, 15 and 120 litre plastic containers

Typical Properties

Appearance	Transparent milky white liquid
Sheen	Gloss
Main components	Polyurethane
Solid content, % by weight	30%
Specific gravity	1.04
Viscosity (#4 Ford Cup)	18 seconds
Spread rate	8-12 m ² per litre
Dry time at 25°C	30 minutes
VOC content	Green Building Council Compliant.
Flashpoint	Does not burn

First Aid

For safety information or Material Safety Data Sheet call EcoShield Customer Service on 08 8185 7148.

For emergencies, please contact 24-hour mobile 0413 075 994.