



CARBON COAT (POLYCARBONATE)

Non-Yellowing Abrasion & Impact Resistant High-Build Top-Coat for Interior & Exterior Floors

Description

Carbon Coat is an environmentally friendly water-based polycarbonate high-build top-coat that provides a UV stable, hard wearing, abrasive and impact resistant surface film that is ideal for heavily trafficked floors.

Carbon Coat forms an ultra-clear membrane with outstanding clarity that enhances the vibrancy of resurfaced floors and protects against moisture penetration, staining, dirt, dust, and wear on concrete and hard surfaces including mechanically ground, smoothed, and polished concrete floors.

Carbon Coat emits almost zero toxic odours (VOC's) and is water-based, making it safe to use and minimising environmental impact.

- Fast drying allowing jobs to be completed within one day
- Excellent dirt pick-up resistance for easy maintenance and cleaning
- Virtually odourless and environmentally friendly
- Ready to use from the container and easy to apply

Coverage

One coat will cover approximately 8 – 12 square metres per litre.

Surface Inspection

Surface must be clean, dry and free from grease, loose paint, oil, dust, curing agents or any foreign material that might prevent proper adhesion.

Surface Preparation

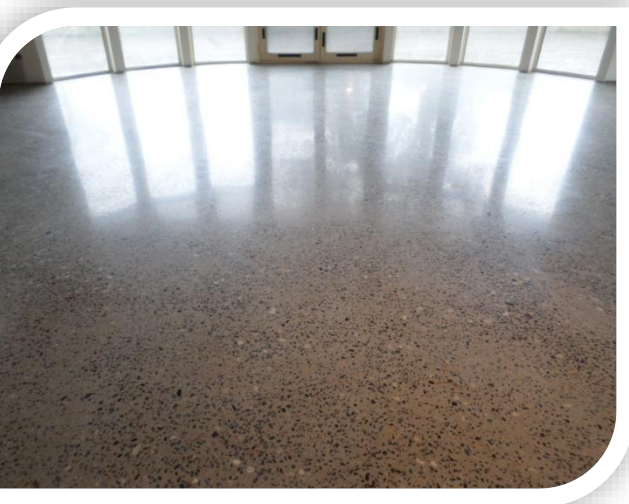
Concrete, Slate, Vinyl, Ceramic and Stone: Substrate should be made free from contaminants by diamond grinding or shot blasting. When using other methods ensure it is porous and the product is able to soak in and properly bond. If using acid etches, ensure it is applied, neutralised and rinsed per manufacturer's instructions and that the substrate is dry.

Existing Coatings: Sand the surface with 100 grit abrasive paper and remove debris with **Recoat Etch** just before the new application.

Application

Primer: Eco Bond should be applied liberally and worked into the surface to help penetration and adhesion. It can be applied with a bucket and scrubbed into the substrate with a soft bristled broom. For general application it can be brushed, rolled or sprayed.

Top Coat: Shake container well before use. Apply **Carbon Coat** within 24 hours of the primer coat. Brush, roll or spray even coats to ensure surface is properly covered. When rolling, use a 10mm microfibre roller. Depending on look, thickness, water, and abrasion resistance desired, 1 or 2 coats may be applied. A minimum dry time of 30 minutes at 25°C before re-coat is required.



Uses

Carbon Coat is suitable for hard surface interior and exterior applications as an abrasion and impact resistant top-coat that is effective on concrete, slate, vinyl, ceramic and stone floors.

Advantages

- Extremely durable, impact and abrasion resistant for heavy traffic conditions
- Outstanding clarity enhancing vibrancy of resurfaced floors
- Super flowability eliminating brush and roller marks
- UV Stable and non-yellowing maintaining a clear surface film

Maintenance

Cleaning the coating is best done by using **Eco Clean**. Alternatively, use a mild detergent such as dishwashing liquid in warm water.

Limitations

- Not suitable for vehicular traffic
- Do not apply in conditions above 30°C or below 10°C
- Do not apply onto a damp or moist surface or the coating can turn white and may delaminate
- All moisture should be kept away a minimum of 72 hours after application.
- Always read MSDS before use of any product

Storage Period: 2 years (5-35°C)

Packaging: 5, 15 and 200 litre plastic containers

Typical Properties

Appearance	Transparent liquid
Sheen	Satin or Gloss
Main components	Polycarbonate
Specific gravity	1.00-1.05
Viscosity (#4 Ford Cup)	23 seconds
Spread rate	8 – 12 m ² per litre
Dry time at 25°C	30 minutes
VOC content	Compliant
Flashpoint	Does not burn

First Aid

For safety information or Material Safety Data Sheet call EIC Customer Service on 08 8185 7148.

For emergency please contact 24-hour mobile 0413 075 994.